



20th IARU
REGION 1 ARDF
CHAMPIONSHIPS
2015

AUGUST 17–23

BULLETIN No. 2

*Dear sport and ARDF friends,
the jubilee 20th Region 1 Championship is approaching
and we are pleased to welcome you in Marienbad in August (unconventionally).
Besides the sporting experience, we have prepared a number of trips for you for the
excursion day to other locations of the West Bohemian Spa Triangle — to Carlsbad
(Jan Becher Museum, Colonnade, Hot Spring) or to Franzensbad (Glauber Spring
Hall, nature reserve SOOS). Shorter trips will take you on a tour to the castle
Kynžvart (Metternich) or to a monastery in “Teplá” (Historical Library). In
Marienbad itself, there is a colonnade with a singing fountain waiting for you, you
can visit the mini park with models of architectural monuments, nature reserves
“Smrad’och” (stinky) and “Kladská.” Last but not least, you can make use of a public
golf course. I deeply believe that you will enjoy your stay in Marienbad and that you
will come back again.
Finally, I’m glad I can inform you that the jubilee championship will be organized
under the auspices of Miroslav Nenutil, the senator of the Czech Parliament.*

*Miroslav Vlach, OK1UMY
Chairman of the organizing committee*

Organizer:

Czech Radio Club (CRC) — Czech ARDF Association.

Venue:

Mariánské Lázně or Marienbad, a spa town in the Karlovy Vary region of the Czech Republic.

Event center:

Hotel Krakonoš***
Mariánské Lázně 660,
353 01 Mariánské Lázně,
Czech Republic
<http://www.hotelkrakonos.eu/en/>



Accommodation:

In the event center and within walking distance (up to 1.5 km) — Hotel Krakonoš (145 beds), Hotel Goethe (50 beds), Hotel Zlatý Zámek (60 beds) and Hostel Zlatý Zámek (200 beds). Transportation between hotels and other places of interest will be arranged.

Competition rules:

IARU Region 1 Rules for Championships in Amateur Radio Direction Finding (Part A and Part B), version 2015, apply.

International Jury:

- Kai Pastor, DG0YT (DARC, Germany) — chairman,
- PA Nordwaeger, SM0BGU (SSA, Sweden) — member,
- Jacek Czerwinski, SP2LQC (PZK, Poland) — member,
- Ole Garpestad, LA2RR (NRRL, Norway) — member,
- Roussko Roussev, LZ1RT (BFRA, Bulgaria) — member,
- Igor Lazarev, US0VA (UARL, Ukraine) — member,
- Miklos Venczel, HA0LZ (MRASz, Hungary) — member,
- Remigijus Masilionis (LRMD, Lithuania) — member,
- Jiří Pavlů, OK1CHE (CRC, Czech republic) — siting referee,
- Miroslav Vlach, OK1UMY (Czech Republic) — event and technical director,
- Tereza Skládanková (Czech Republic) — secretary of the Jury.

Assistants to siting referee:

Martin Baier, Miroslav Vlach, Jan Michalec.

Terrain characteristics, clothing, weather:

There is alternating continuous and dense forest which is interwoven with a dense network of paths of varying quality.

Classics—moderately rugged at an altitude 540–760 m with

a number of stones and rocks; Foxoring—hilly at an altitude

540–900 m partly stones and rocks; Sprint—flat.

Temperatures in August are typically 20–25 °C,

thunderstorms should be expected in this time of the year.

There is no restriction on the type of footwear

or clothing, however, covering elbows and

knees is highly recommended. Ticks (castor

bean tick — *Ixodes ricinus*) are frequently

found in the event area. Giant hogweed

(*Heracleum mantegazzianum*, see on the right)

is also widely spread around the area (but not

within the championship maps) — its sap can

cause phytophotodermatitis (severe skin

inflammations) when the afflicted skin is

exposed to sunlight (or UV).

Awards:

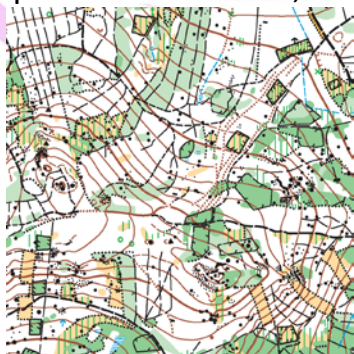
Medals and diplomas.



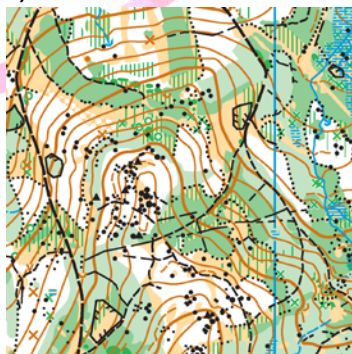
Maps:

All maps are of IOF standards, status: spring 2015.

- 1st classic: 1:15 000, size A4, contour interval 5 m.
- 2nd classic: 1:15 000, size A3, contour interval 5 m.
- Foxoring: 1:10 000, size A3, contour interval 5 m.
- Sprint: 1:5 000, size A4, contour interval 2 m.



Samples: classics



foxoring



sprint

Technical parameters of the equipment:

Flags:

- 3.5 MHz band, standard orange and white triangle,
- 144 MHz band, standard orange and white triangle with a blue vertical stripe.



Marking device:

SportIdent — SI card (any version) numbers will be collected in the entry form. For those who do not have any in their possession, SI card will be provided.

144 MHz transmitters:

- RF power 1 W ERP,
- frequency: Tx 1–5: MOE–MO5 144.50 MHz, finish beacon: MO 144.85 MHz,
- antenna: crossed dipoles 2.5 m above the ground level.

3.5 MHz transmitters:

- RF power 3 W,
- frequency: Tx 1–5: MOE–MO5 3.55 MHz, finish beacon: MO 3.60 MHz,
- antenna: 8 m vertical + 8 m single radial counterpoise.

3.5 MHz transmitters for foxoring (continuous)

- RF power: 10 mW, beacon: 1 W
- antenna: field transmitters 30 cm vertical + no counterpoise,
beacon: 8m vertical + 8 m single radial counterpoise,
- frequency: Tx 1, 2, 1F, 2F: MOE, MOI 3.52 MHz,
Tx 3, 4, 3F, 4F: MOS, MOH 3.55 MHz,
Tx 5, 5F: MO5 3.57 MHz,
finish beacon: MO 3.60 MHz,
- Tx 1–5, finish beacon: keying speed 50 PARIS, Tx 1F–5F: keying speed 70 PARIS.

3.5 MHz transmitters for sprint (1 minute cycle – 12 sec:48 sec)

- RF power: 1 W,
- antenna: 8m vertical + 8 m single radial counterpoise,
- frequency: Tx 1–5: MOE–MO5 (keying speed 50 PARIS) 3.52 MHz,
spectators control : S (keying speed 50 PARIS) 3.55 MHz,
Tx 1F–5F: MOE–MO5 (keying speed 70 PARIS) 3.57 MHz,
finish beacon: MO (keying speed 50 PARIS) 3.60 MHz.

(Required 30 kHz channel spacing is sometimes reduced in order to comply with the national regulations and the Rules.)

Note on Sprint:

Normally, you would not need to read this paragraph — as long as you have found all the transmitters on both loops in a proper order. **What follows is a description of a procedure that would be applied to non-standard cases.** You can imagine that the sprint consists of four separate pieces (between start and finish):

- a loop with slow transmitters (1, 2, 3, 4, 5), searched in any order,
- a spectator control (S),
- a loop with fast transmitters (1F, 2F, 3F, 4F, 5F), searched in any order,
- a beacon (B).

Any of them could be skipped (with different consequences for the results), however, they must be found in the proper order (i.e., a→d). A wrong transmitter in any loop is just ignored. Finally, the best possible selection of transmitters for the competitor is taken into account.

Examples:

Look for examples of punching and results (let's say, this category omits 5 and 5F):

- start, **1, 2, 3, 4, S, 1F, 2F, 3F, 4F, B**, finish
→ correct, 10 Tx,
- start, **1, 2, S, 2F, 3, 4, S, 1F, 2F, 3, S, 3F, 4F, B**, finish
→ 10 Tx,
- start, **1, 2, S, 2F, 3, 4, 1F, 2F, 3, S, 3F, 4F, B**, finish
start, **1, 2, S, 2F, 3, 4, 1F, 2F, 3, S, 3F, 4F, B**, finish
→ both best selections give 8 Tx,
- start, **1, 2, 3, 4, 1F, 2F, 3F, 4F**, finish
→ 8 Tx,
- start, S, B, finish
→ not classified (a sole beacon is not counted, a spectator control is like a beacon for the first loop),
- start, **1F, S, 3, B**, finish
start, **1F, S, 3, B**, finish
→ both best selections give 2 Tx.

Note on use of GPS devices:

Similarly to the recent years: dedicated wrist GPS and GPS trackers attached to an arm, including sensors, are allowed as long as they are used to generate a history track, including any other data, for later reviewing after finishing the race. Even though the units might be able to display a path, the runner is not permitted to make use of that function during the race. Both still cameras and video cameras are allowed as long as they comply with the aforementioned rule. In simple words, the device should not possess any mapping and/or communication feature.

Note on thunderstorm:

In a case of a severe thunderstorm, the Chairman of the Jury may recall the competition (27.5 of the Rules)—in such case, it will be announced to competitors by switching off all the transmitters with an exception of the beacon and **Tx No. 1** (MOE, not necessarily the one placed in terrain) which both remain operating continuously. The competitors shall set for the finish immediately.

Insurance and Medical Care:

First aid facility will be available at the finish areas for all competitions. No cost to the participant applies for on-site minor treatment; however, the cost for ambulance transportation, emergency department visits, and clinic visits will be the participant's responsibility. Thus, we recommend you to purchase an insurance covering such expenses.

Visa:

The Czech Republic is a part of the Schengen area, thus, most of the countries do not need an entry permit. For those who need visa, we will prepare invitation letters upon request. If you are not sure, check on the [web page of Ministry of Foreign Affairs](#).

Transportation to the venue:

Mariánské Lázně can be easily reached by car (highway D5 Praha–Plzeň–Rozvadov → use exit 129; speedway R6 Karlovy Vary–Cheb), by train (railway track Praha–Plzeň–Mariánské Lázně–Cheb–Norimberk), by bus (route Praha–Plzeň–Mariánské Lázně–Cheb). Nearest international airports are in Karlovy Vary and Prague. We are able to arrange transportation of participants from Karlovy Vary (KLV) or Prague (PRG) international airports upon request. Such request shall be send to organizers well in advance (together with entries), certainly not later than three weeks before the event. Price: PRG 15 EUR (one way), KLV 5 EUR (one way).

Categories:

W19, M19, W21, M21, W35, M40, W50, M50, W60, M60, and M70.

Participants:

Over 300 competitors accompanied by approximately 40 team officials and visitors from 23 countries expressed their intention to take part in the event. We still hope that the following list of countries is not the final one: Belarus, Belgium, Bulgaria, Croatia, Denmark, Finland, France, Germany, Great Britain, Hungary, Lithuania, Moldova, Netherlands, Norway, Poland, Romania, Russia, Slovakia, Slovenia, Sweden, Switzerland, Ukraine, Czech Republic.

Entries and Registration:

Entry: number of participants (i.e., competitors per category, team officials, visitors), details of team's arrival and departure, requested type of accommodation and trip, contact person and her/his cell-phone and email.

Registration: for all participants (competitors, team officials, visitors) full names, passport or ID card number (for visa and accommodation/registration purposes). For each competitor: category, date of birth, and SI card ID.

See below for deadlines. Entry and Registration forms will be distributed by email and available at the event web page in April.

Schedule:

(August 12–16, 2015 — training camp)

Monday, August 17, 2015 — arrival, training (sprint + foxoring),

Tuesday, August 18, 2015 — foxoring, opening + awarding ceremony,

Wednesday, August 19, 2015 — sprint, training (classics), awarding ceremony,

Thursday, August 20, 2015 — first classic, awarding ceremony,

Friday, August 21, 2015 — trips, competition for the Blind,

Saturday, August 22, 2015 — second classic, awarding ceremony and hamfest,

Sunday, August 23, 2015 — departure.

ARDF WG meetings are planned on Tuesday and Friday afternoons.

Team leaders' meetings are scheduled for afternoons preceding each competition.

Jury will meet on the days prior to each competition and right after it.

Trips:

Trips are included in the Accommodation and Board fee. We kindly ask you to express your wishes for the trip in the entry form. Full-day trips include lunch, while from the half-day trips you'll come back to the hotel. Also, if you want to visit the competition for the Blind, a half-day trip is your choice.

(A) Full-day trip to [Carlsbad \(Jan Becher Museum, Colonnade, Hot Spring\)](#).

(B) Full-day trip to [Franzensbad](#) (Glauber Spring Hall, [nature reserve SOOS](#)).

(C) Half-day trip to the [castle Kynžvart](#) (Metternich).

(D) Half-day trip to a [monastery in "Teplá"](#) (Historical Library).

(E) You can organize your own free-day in Marienbad itself or in its close vicinity.

Fees:

Entry fee (competitors and team officials) — 45 EUR per competition, 180 EUR per the whole event.

Accommodation, Full board, Trip, Hamfest

(A) hotels Krakonoš, Goethe, and Zlatý Zámek: 50 EUR per night, 280 EUR per the whole event (Mon—Sun).

(B) hostel Zlatý Zámek: 33 EUR per night, 180 EUR per the whole event (Mon—Sun).

It is possible to pay an extra night (+ dinner and breakfast, no lunch) and arrive already on Sunday, Aug 16. The price is 40 EUR (25 EUR respectively).

Full package: 460 EUR or 360 EUR (depending on accommodation).

Official **bus to the finish for visitors** — 5 EUR per competition. The use of private cars or buses is allowed.

Separate **Trip fee** (e.g., for visitors or for those staying on their own, otherwise it is regularly included in accommodation and board costs) — 20 EUR.

Separate **Hamfest fee** (e.g., for visitors and those staying on their own, otherwise it is regularly included in accommodation and board costs) — 15 EUR.

Training camp — 40 EUR per person per night (includes accommodation, full board, and entry fee), 180 EUR per the whole training camp (Wed—Mon).

Number of officials per team is not limited.

Visitors and media representatives pay no entry fee and may use either official accommodation and transportation or make their own arrangements.

We accept **unofficial competitors** outside the IARU Region 1 only. The number is not limited, however, they must be at least 15 years old. They'll be started in 3–4 groups (regardless of categories) 20 minutes after the last official competitor group. Unofficial competitors pay regular entry fees.

Payment:

Wire transfer to the account:

Beneficiary: Asociace radiového orientacního behu ČR

Ben. Address: Zátokova 100/2, 160 17 Praha 6

Bank: GE Money CZ

BIC: AGBACZPP

IBAN: CZ68 0600 0000 0001 5498 8883

Account: 154988883 (bank code 0600)

Bank address: Vitezne namesti 577/2, 160 00 Praha 6, Czech Republic.

Transfers shall be carried in EUR. It is your obligation to pay all the bank fees.

Therefore, you should set the “code for transfer” to “OUR” in your transfer form.

Deadlines:

Entries: June 1, 2015 (with number of team officials and competitors per category, including specification of requested type of accommodation and trip).

Registration (full names and details for competitors and team officials): before **August 9, 2015**, if possible, certainly not later than by August 16, 2015. Late registration cannot be accepted unless approved by the organizer and the International Jury.

Fee payment: June 30, 2015.

For late entries, we cannot guarantee accommodation. For late payments we apply an additional charge of 50 EUR per person.

Cancellation policy:

Before June 30, 2015, we return full amount minus bank charges.

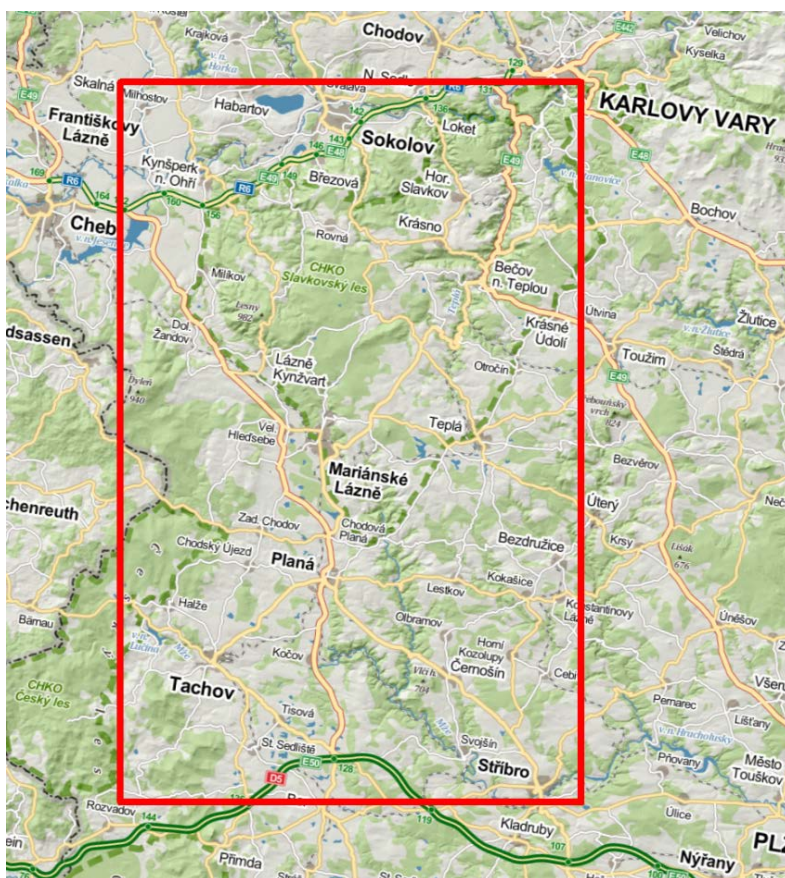
Before July 31, 2015, we return accommodation and board costs minus bank charges.

Embargoed area:

Since Bulletin No. 1 was published, it is forbidden to train or move around in any forested area within the red rectangle depicted below. The allowed exceptions are official orienteering and ARDF events organized by the Czech Orienteering

Federation or by the Czech ARDF Association, including the training camp. For those willing to attend some of the Czech national competitions, please, refer to [Czech ARDF webpage](#) for more information.

The locations of the finish areas will be announced in the Bulletin No. 3, exact locations and further instructions will be specified at the event web site.



Training camp:

Schedule – Aug 12 arrival, Aug 13 classics (both bands), Aug 14 foxoring, Aug 15 classics (both bands), Aug 16 sprint.

Fees — 40 EUR per person and night (includes accommodation in hostel Zlatý Zámek, full board, and entry fee). 180 EUR per whole training camp (Wed–Mon).

All training competitions will be organized as a self-service, i.e., transmitters will be operating in a certain time range (10.00 –13.00, 10.00–15.00 for classics), every participant can start and finish by themselves, there will be an SI system installed.

European ARDF Championship for the Blind:

When enough visually impaired competitors express their intention to take part in the competition for the Blind, the European Championship for the Blind will take place on the excursion day, i.e., on Friday, August 21, 2015.

The competition will take place in the park near “Ferdinand spring” within the town of Marienbad, easily accessible by foot from all the hotels.

There will be NO entry fee!

We kindly ask all societies wishing to register visually impaired competitors to express their intention [by email](#) before June 1, 2015. The detailed information as well as the final rules for the event will be announced in the next Bulletin No. 3.

Bulletin No. 3:

Next bulletin will be released at the very beginning of July 2015.

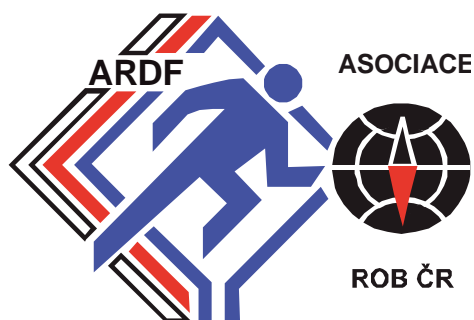
Contact:

Czech ARDF Association
EC 2015 organizing committee
Zátokova 100/2
P.O. Box 40
Prague 6 – Strahov
CZ-16017
Czech Republic

email: info@ardf2015.cz

web: <http://www.ardf2015.cz/>

phone: + 420 777 238 227



Venue:



Partners & Sponsors:



LEKRAM W
a.s.



Lékárna Evropská
Váš pomocník na cestě ke zdraví

